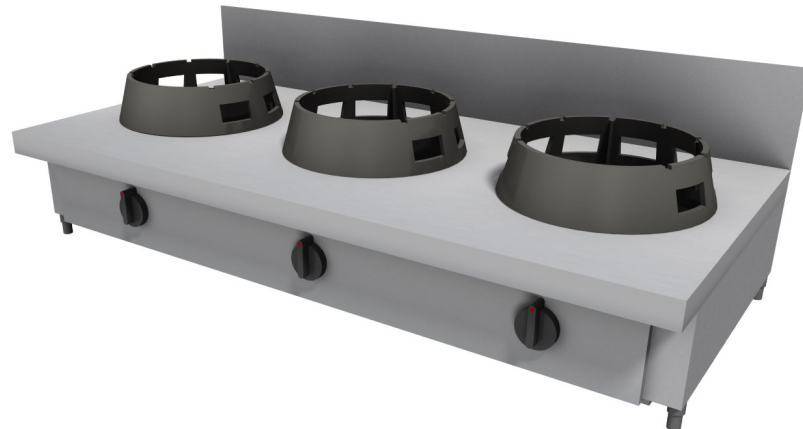


Wok stove, LS model.

LS - CC/03 - 03150060BB



Model without support or on open stand h 850 mm. Cooking top made of stainless steel AISI 304 18/10 (mm. 2,5 thick), reinforced with welded pipes (PL). Splashback h 200 mm (AL). Structure made entirely of stainless steel AISI 304 18/10. Removable drip pans (PG). Stainless steel AISI 304 18/10 adjustable feet. Atmospheric burners C 9,5 kW - T 14,0 kW - S 21,0 kW - P 3,0 kW - M 4,5 kW - G 7,5 kW. Optional: Pre-mixing radiant infra-red burner "B" 23,0 kW - Watt 110,0 - Ac230V/50Hz.

TECHNICAL DATA	
Width (mm)	1500
Height (mm)	275
Depth (mm)	600
Weight (Kg)	105
Volume (m³)	0.3
Burners	3
Burners combination	A scelta tra / Choosing between / On peut choisir entre / Es posible elegir entre / 9,5 - 14,0 - 21,0 kW (no price difference) - 23,0 kW (extra cost)

EXTRA DATA
Model "C", "T" 175 mm, model "S" 220 mm, model "B" 150
Removable drip pans

FORHANDLER:



FastShop.dk
35816700

STORKØKKEN UDSTYR